

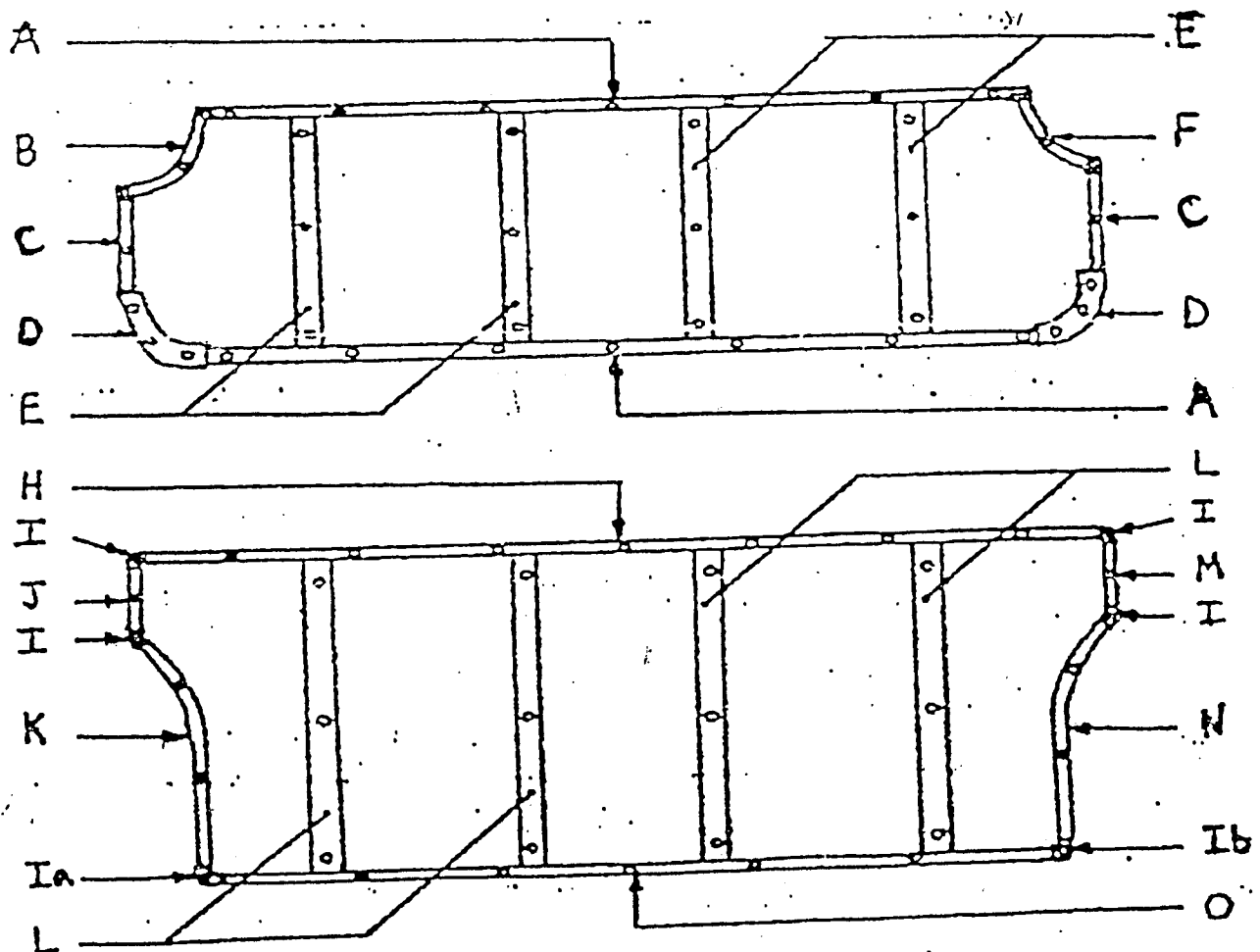
This article was originally printed earlier in another edition of Safari News, but good information bears repeating, especially for our newer members.

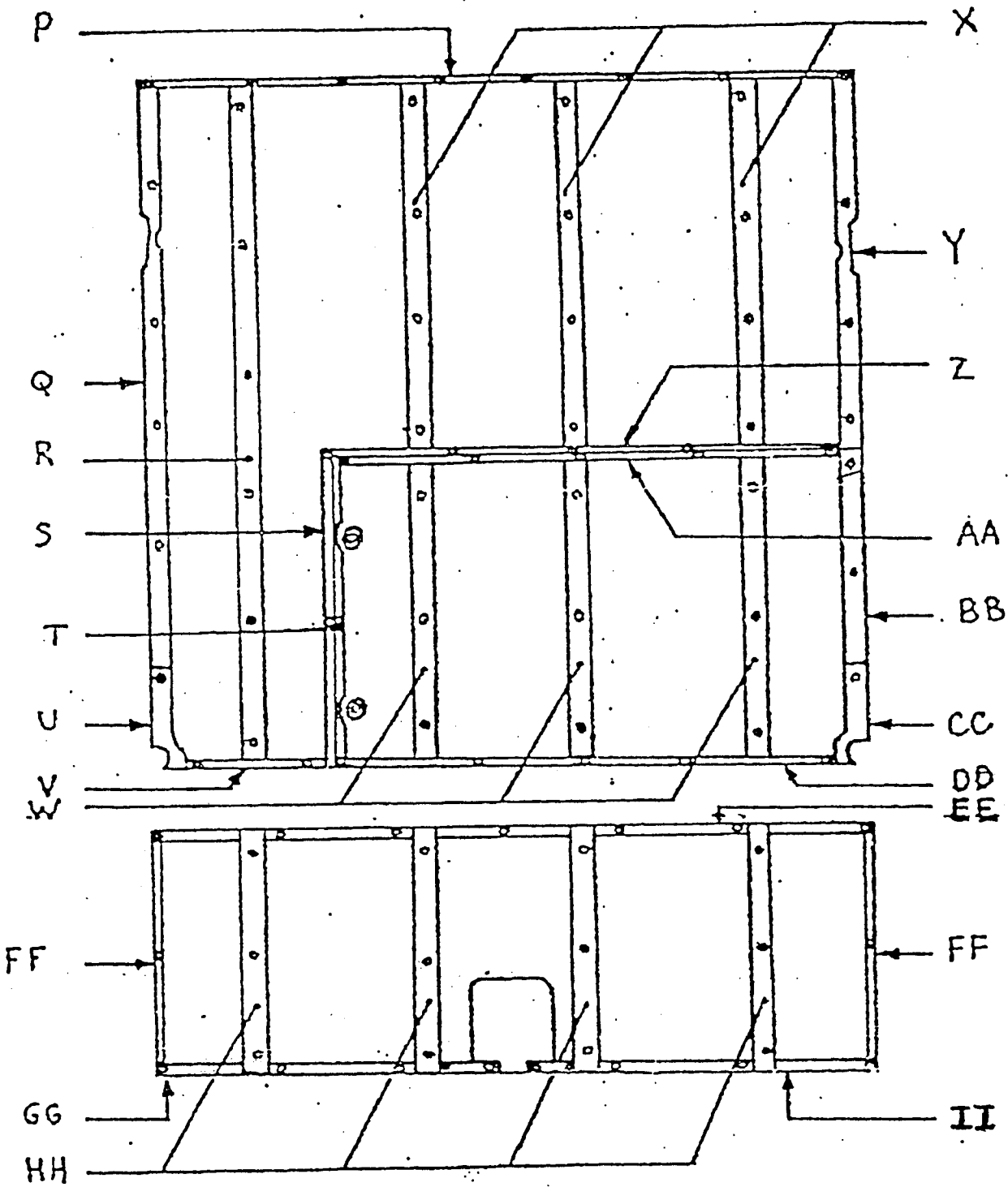
## CARGO AREA TRIM FOR SAFARIS

by Michael Munger

One area of Safaris which is usually in need of repair and restoration is the rear interior cargo area. Some ex-Safari owners seem to have thought that the cars were designed for transporting cattle! Often the stainless and other trim pieces are gone or badly damaged. I hope these diagrams and charts will be useful to Safari lovers in locating and replacing the parts for their cargo areas. The information presented here was derived from a '57 2 door Custom Safari. I imagine that the other years are different in some aspects and care should be taken in transferring this information to other years and models.

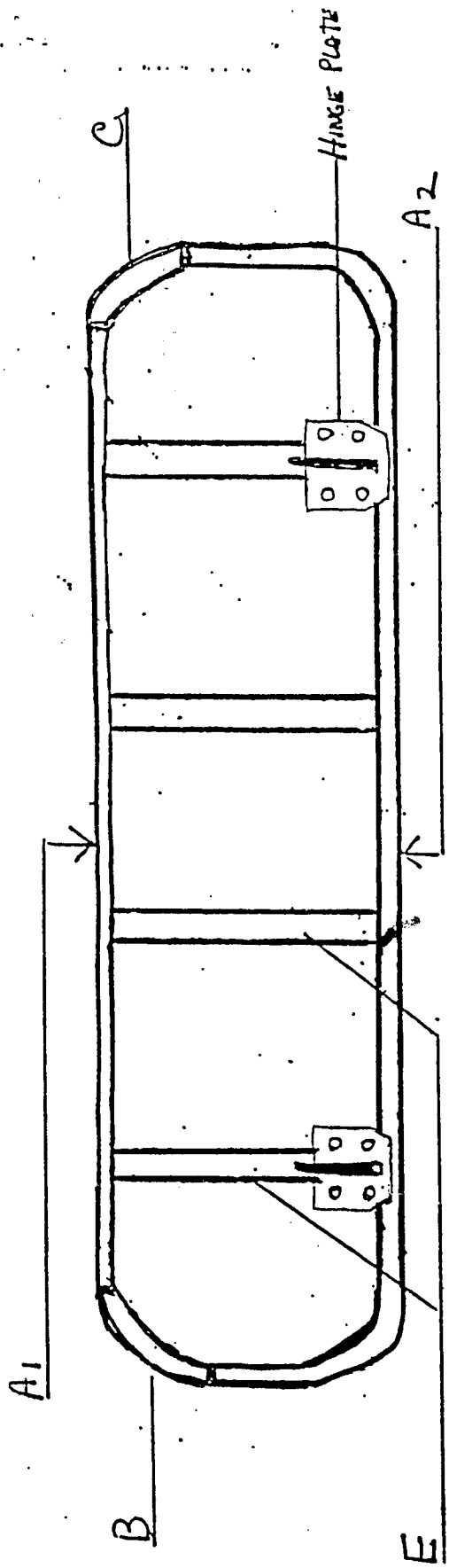
Scale: 1/10 inch = 1 inch (approximately)





LEGEND FOR '57 CUSTOM SAFARI 2 DOOR  
SEAT, CARGO AND TAIL GATE INTERIOR TRIM PIECES

Special Pieces	
Code Letter	Description
D	Hinge Cover
I	Corner Pieces
Ia	Special Corner Piece
	Corner Piece



55 SAFARI

